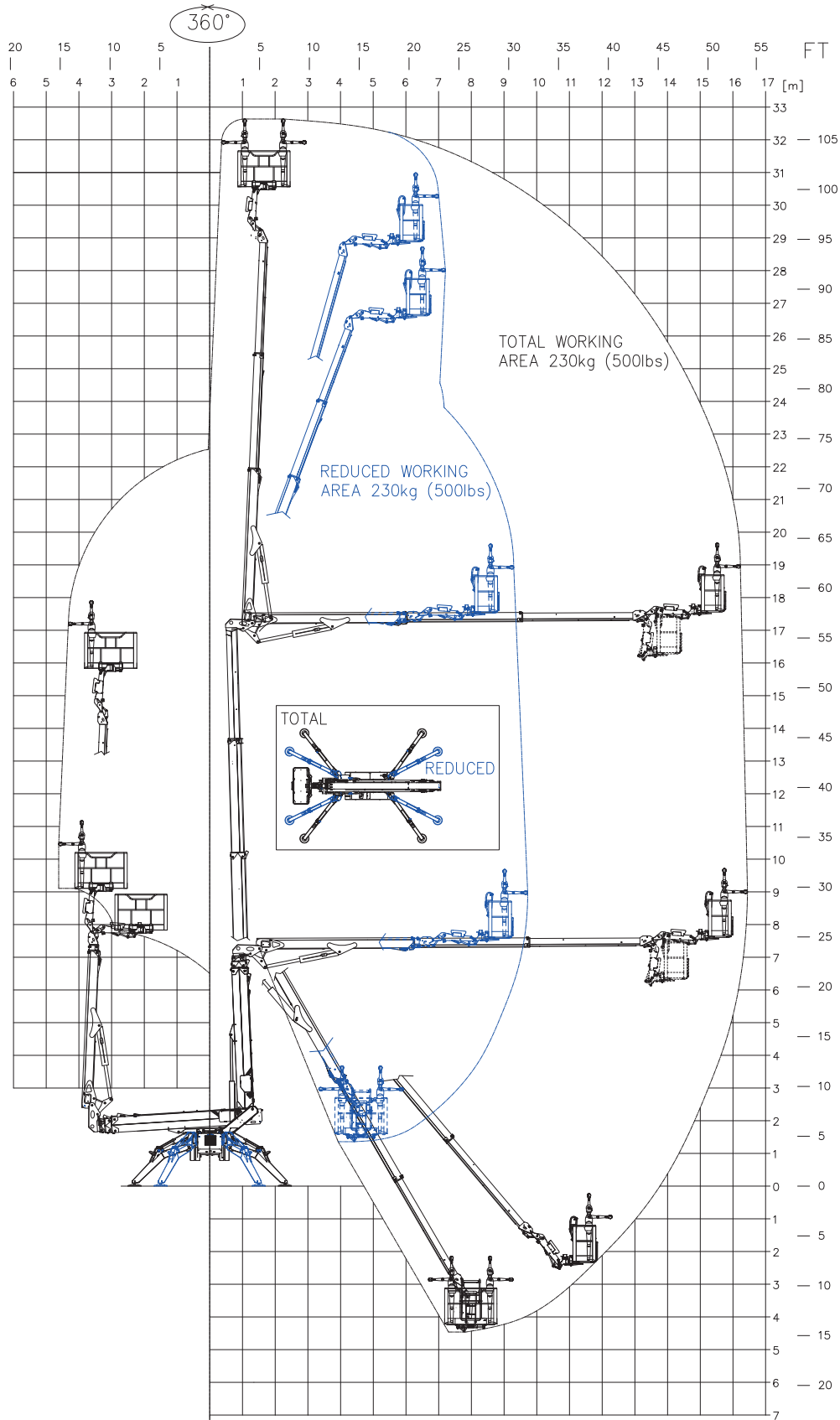


# TRACKED AERIAL PLATFORMS



**MAX LOADING CAPACITY 230 KG**  
(2 persons  
80x2=160 kg  
+  
toolbox 70 kg)

**TRACKED AERIAL  
PLATFORMS**

---

**DIESEL ENGINE**

Brand..... KUBOTA  
 Type ..... D902 Autorev  
 Pistons no. and displacement ..... 898 cm<sup>3</sup>  
 Max. gross power ..... 21,6 HP - 16,1 kW @ 3200 rpm  
 Electrical start ..... 12 volt

**ELECTRIC MOTOR**

Optional ..... 380V / 50HZ - 11 kW

**HYDRAULIC PUMPS**

Pump diesel engine ..... no. 2 gear pumps  
 Pump electric motor ..... no. 2 gear pumps

**TRACKED UNDERCARRIAGE**

Track tensioner ..... grease-filled  
 Rollers no. per side ..... 6 + slide  
 Widening system ..... 1200 / 1700 mm  
 Translation speed with 2<sup>nd</sup> auto2speed ..... 0,8 - 1,8 km/h

WEIGHT MACHINE ..... 7700 kg  
 DIESEL FUEL TANK..... 25 litri  
 MAX UPPER SLANT ..... 16° / 28,7%  
 MAX WIND SPEED..... 12,5 m/s