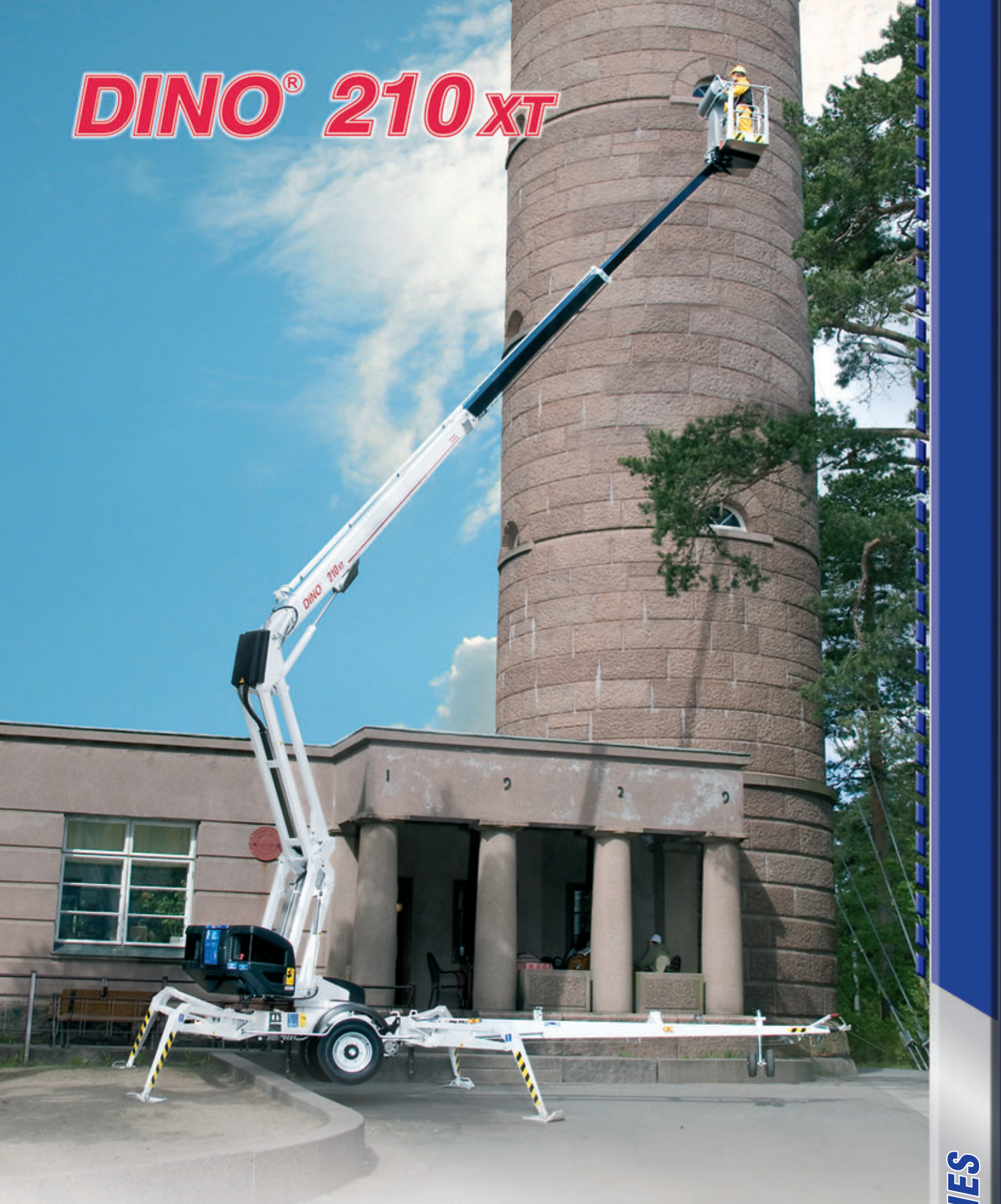


DINO[®] 210 XT



DINO Lift[®]

Get Lifted[™]

XT-SERIES

DINO® 210XT



Spider type outriggers

– large ground clearance, with narrow stabiliser width.



Petrol or diesel power pack is standard

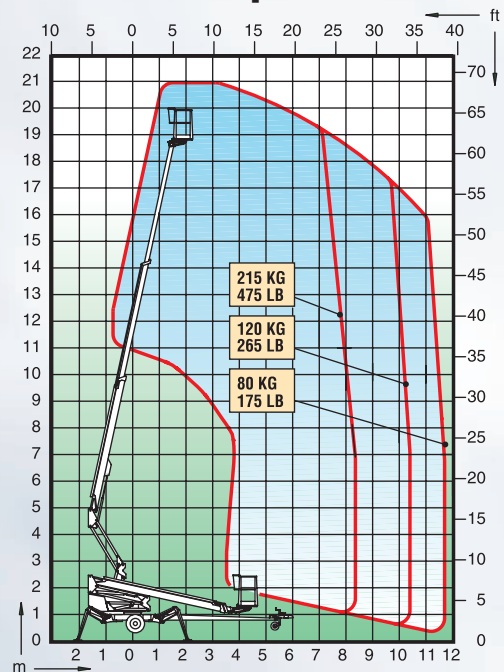
– power for lift also without mains.



User friendly driving system

– easy and effortless manoeuvring.

Technical specification



| | | |
|-------------------------|----------|-------------|
| Max. working height | 21.0 m | 68'10" |
| Max. platform height | 19.0 m | 62'5" |
| Max. outreach | 11.7 m | 38'5" |
| Support width | 4.3 m | 14'1" |
| Lifting capacity | 215 kg | 475 lb |
| Basket size | 0.7x1.3m | 2'4" x 4'3" |
| Boom rotation | cont. | cont. |
| Basket rotation | 90° | 90° |
| Boom control | proport. | proport. |
| Transport length | 7.80 m | 25'7" |
| Transport width | 1.93 m | 6'4" |
| Transport height | 2.29 m | 7'6" |
| Weight | 2440 kg | 5380 lb |
| Driving system | std | std |
| AC-socket in the basket | std | std |
| Electro motor | std | std |
| Petrol power pack | std | std |
| Diesel power pack | opt. | opt. |
| Gradeability | 25% | 25% |

The specification is subject to change without notice.

XT-series DINOs are strong and versatile trailer-mounted platforms.

Articulating boom with telescopic top section and proportional steering ensure stable access to the most demanding work position, even over obstacles and in confined areas.

Thanks to the articulated boom the basket can be moved 2,5 metres vertically.

DINO Lift®

Dinolift Oy • Raikkolantie 145
FI-32210 Loimaa • Finland

Tel +358-2-76 25 900

Fax +358-2-76 27 160

Internet www.dinolift.com